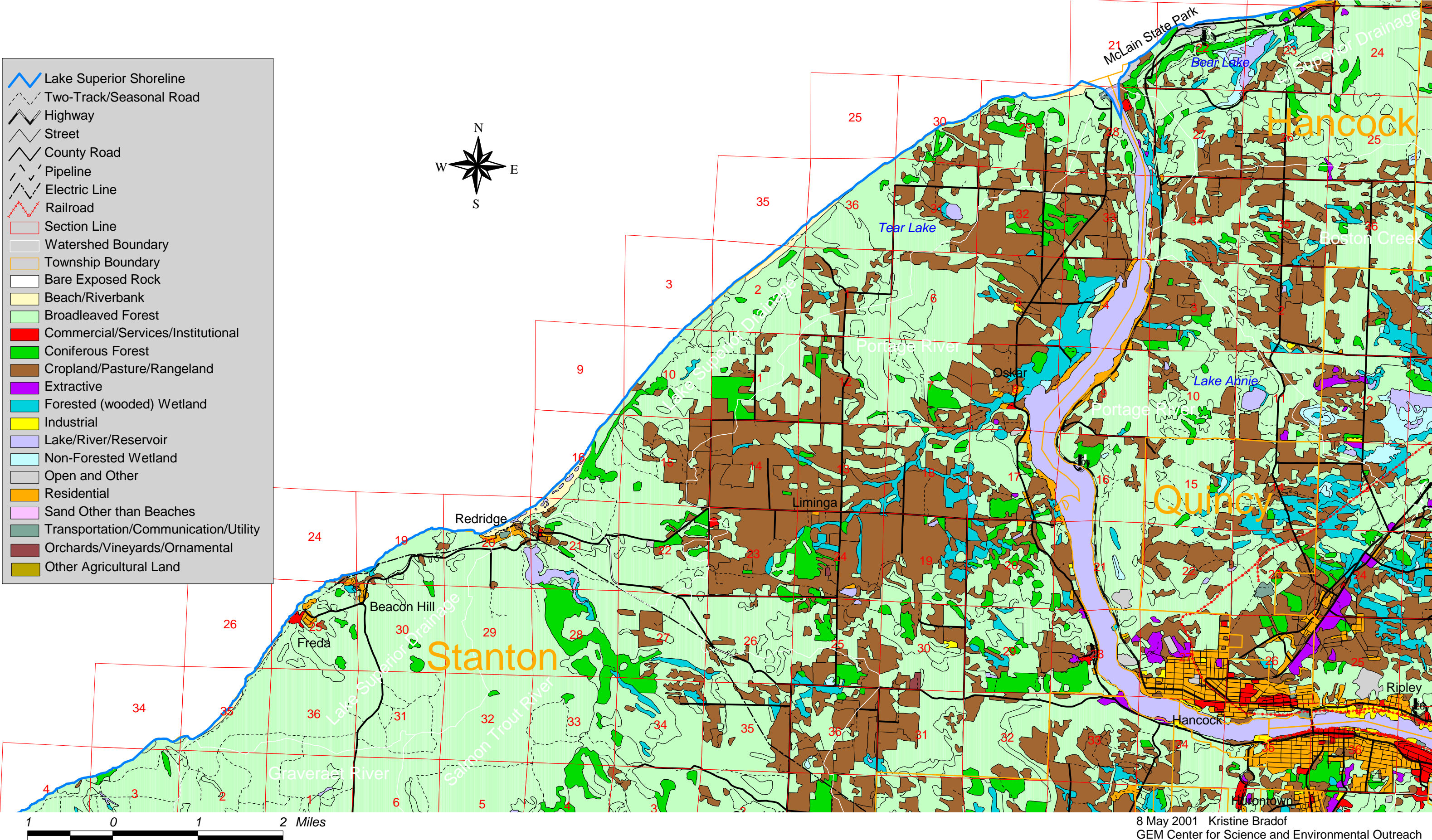


# Land Use/Cover, 1978, Stanton/Hancock/Quincy Townships



- Lake Superior Shoreline
- Two-Track/Seasonal Road
- Highway
- Street
- County Road
- Pipeline
- Electric Line
- Railroad
- Section Line
- Watershed Boundary
- Township Boundary
- Bare Exposed Rock
- Beach/Riverbank
- Broadleaved Forest
- Commercial/Services/Institutional
- Coniferous Forest
- Cropland/Pasture/Rangeland
- Extractive
- Forested (wooded) Wetland
- Industrial
- Lake/River/Reservoir
- Non-Forested Wetland
- Open and Other
- Residential
- Sand Other than Beaches
- Transportation/Communication/Utility
- Orchards/Vineyards/Ornamental
- Other Agricultural Land

8 May 2001 Kristine Bradof  
 GEM Center for Science and Environmental Outreach  
 Michigan Technological University

Source: Michigan Department of Natural Resources Spatial Data Library ([www.dnr.state.mi.us/spatialdatalibrary](http://www.dnr.state.mi.us/spatialdatalibrary)), Michigan Resource Information System (MIRIS)