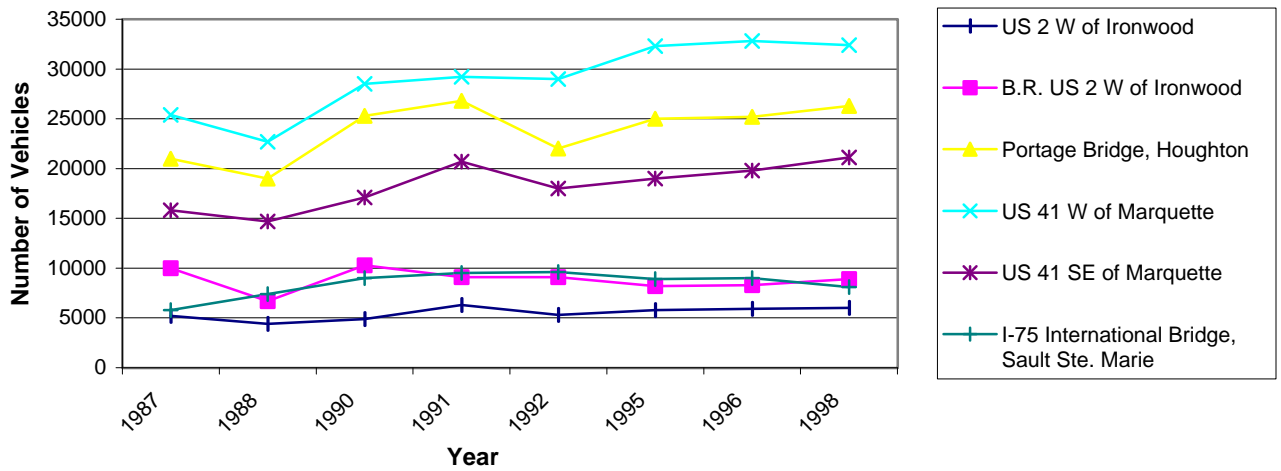


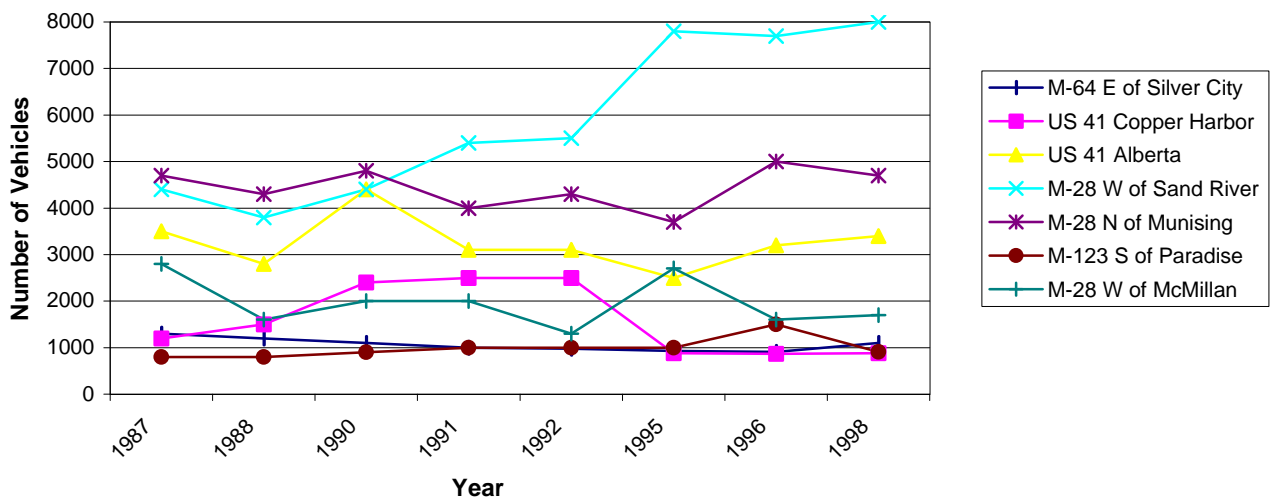
**Fig. 4.15a. Average Daily Traffic in Regional Population Centers
Michigan Lake Superior Basin**



Data Source: Michigan Department of Transportation Annual Average 24-Hour Traffic Volumes (maps)

GEM Center for Science and Environmental Outreach, Michigan Technological University, August 2000

**Fig. 4.15b. Average Daily Traffic in Rural Areas
Michigan Lake Superior Basin**



Data Source: Michigan Department of Transportation Annual Average 24-Hour Traffic Volumes (maps)

GEM Center for Science and Environmental Outreach, Michigan Technological University, August 2000

Note: Six of the traffic volumes above differ from those on the MDOT maps, which showed apparent drops in traffic volumes at US 41 W of Marquette and M-28 W of Sand River. Factors that can produce sudden changes in volume include the following: a change in the exact road segment measured (though it may appear to be the same location as previous years on the map), or special events (such as a parade, festival, or unusual weather conditions) that MDOT could not anticipate during the scheduled traffic monitoring period. MDOT provided six replacement values based on records showing that segment changes affected apparent traffic volumes in 1995 and 1996 W. of Marquette and 1987, 1991, 1995, and 1998 W. of Sand River. (David Schade, MDOT, personal communication)