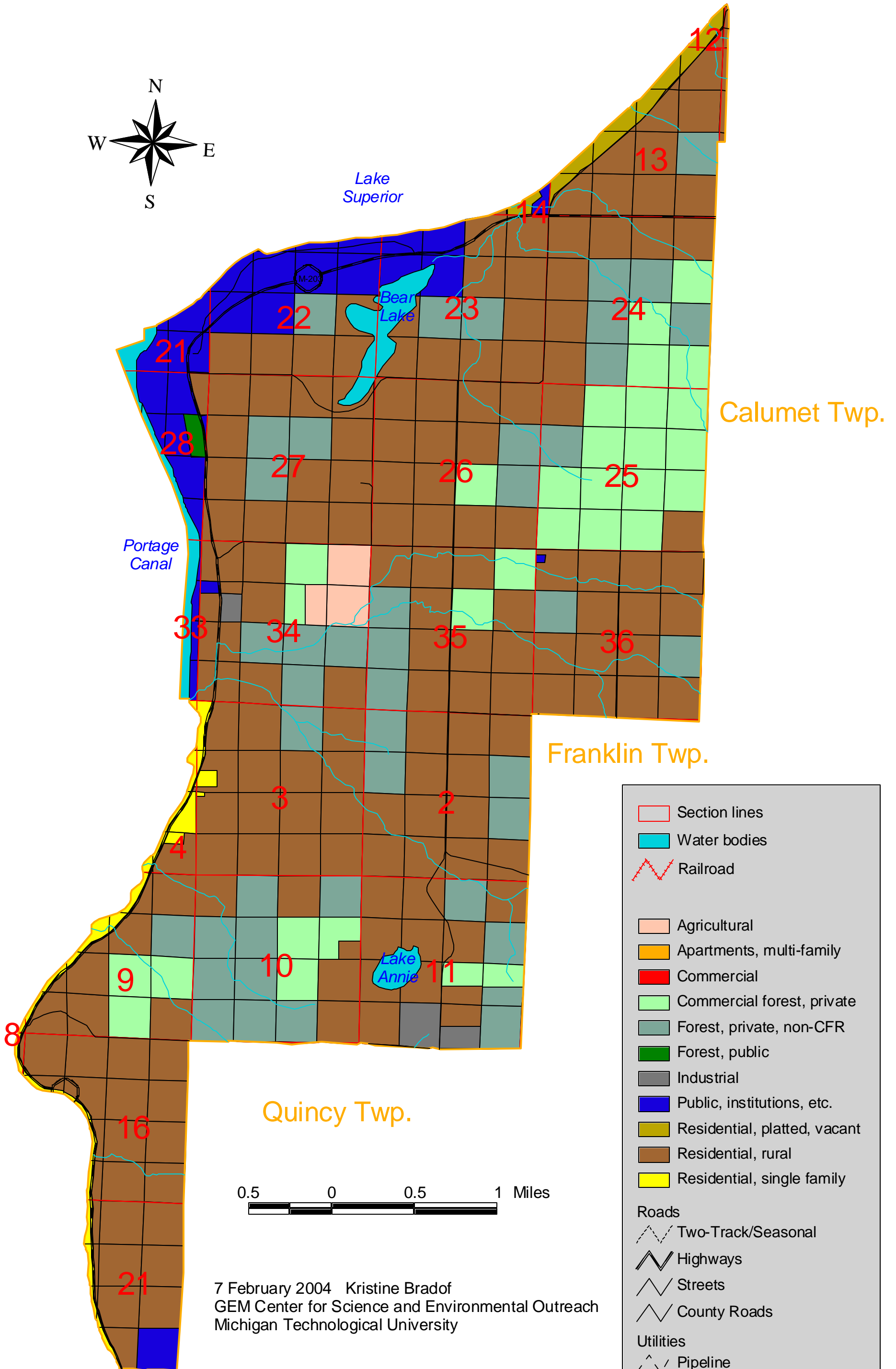


Hancock Township Land Use 2002



7 February 2004 Kristine Bradof
 GEM Center for Science and Environmental Outreach
 Michigan Technological University

The Houghton County Planning Commission funded this mapping project, with a matching grant from the National Environmental Education and Training Foundation. Printing costs were underwritten by the Houghton Rotary Club and the League of Women Voters of the Copper Country.

| | |
|------------------|------------------------------|
| | Section lines |
| | Water bodies |
| | Railroad |
| | Agricultural |
| | Apartments, multi-family |
| | Commercial |
| | Commercial forest, private |
| | Forest, private, non-CFR |
| | Forest, public |
| | Industrial |
| | Public, institutions, etc. |
| | Residential, platted, vacant |
| | Residential, rural |
| | Residential, single family |
| Roads | |
| | Two-Track/Seasonal |
| | Highways |
| | Streets |
| | County Roads |
| Utilities | |
| | Pipeline |
| | Electric Line |