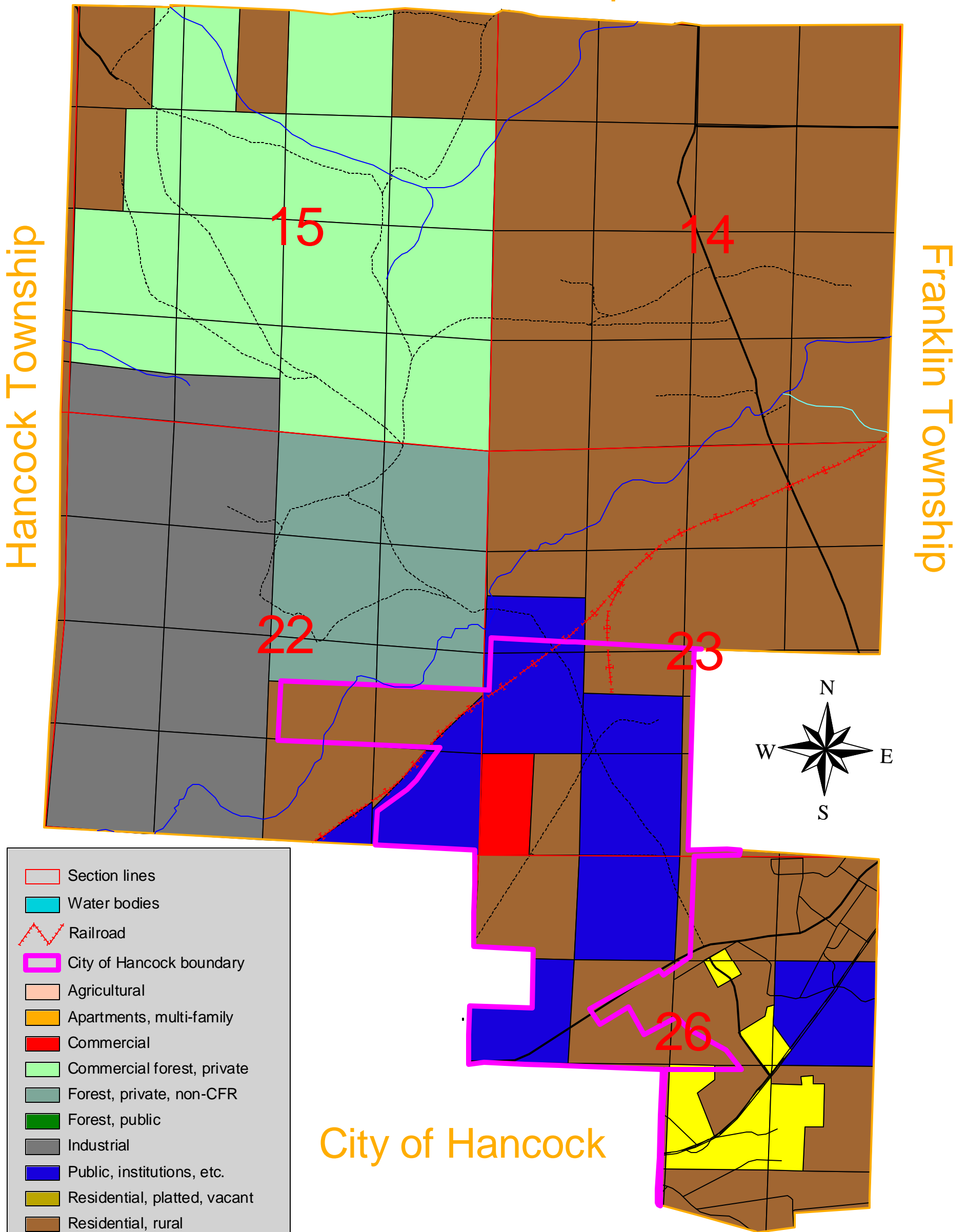


Quincy Township Land Use 2002

Hancock Township



- Section lines
 - Water bodies
 - Railroad
 - City of Hancock boundary
 - Agricultural
 - Apartments, multi-family
 - Commercial
 - Commercial forest, private
 - Forest, private, non-CFR
 - Forest, public
 - Industrial
 - Public, institutions, etc.
 - Residential, platted, vacant
 - Residential, rural
 - Residential, single family
- Roads
- Two-Track/Seasonal
 - Highways
 - Streets
 - County Roads
- Utilities
- Pipeline
 - Electric Line

0 0.5 1 Miles

7 February 2004 Kristine Bradof
 GEM Center for Science and Environmental Outreach
 Michigan Technological University

The Houghton County Planning Commission funded this mapping project, with a matching grant from the National Environmental Education and Training Foundation. Printing costs were underwritten by the Houghton Rotary Club and the League of Women Voters of the Copper Country.