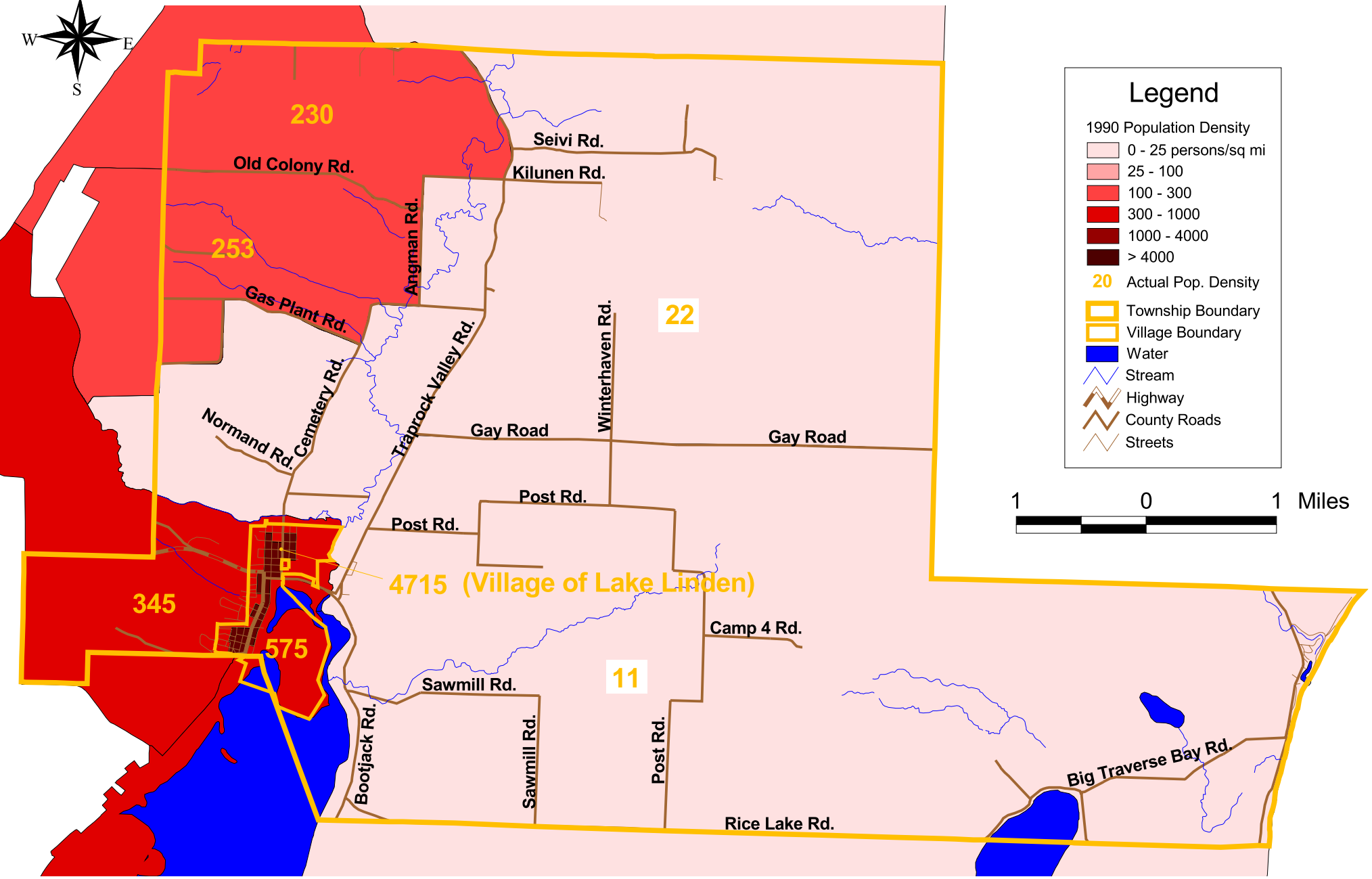


# Schoolcraft Township 1990 Population Density



### Legend

1990 Population Density

- 0 - 25 persons/sq mi
- 25 - 100
- 100 - 300
- 300 - 1000
- 1000 - 4000
- > 4000

20 Actual Pop. Density

- Township Boundary
- Village Boundary
- Water
- Stream
- Highway
- County Roads
- Streets



Sources: U.S. Census Bureau TIGER Census Block Groups  
Michigan Geographic Data Library, Michigan Geographic Framework

July 2004 Katherine Kruse  
GEM Center for Science and Environmental Outreach  
Michigan Technological University

Funding provided by the National Environmental Education and Training Foundation and the Americana Foundation