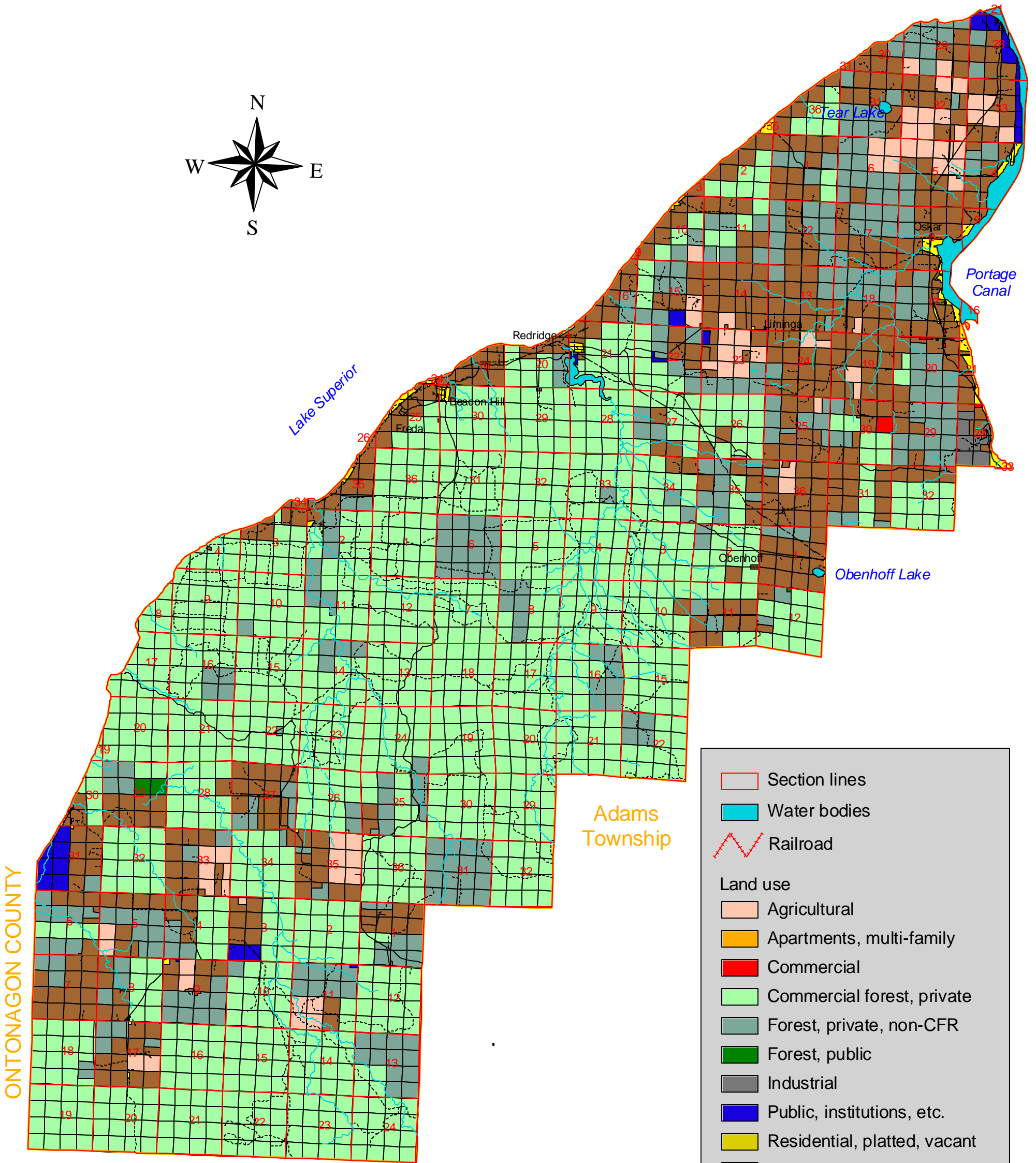
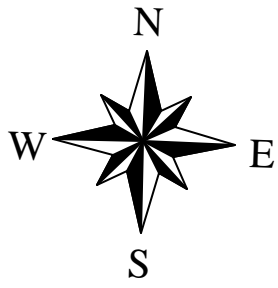


# Stanton Township Land Use 2002



ONTONAGON COUNTY

Adams Township

Elm River Township



	Section lines
	Water bodies
	Railroad
<b>Land use</b>	
	Agricultural
	Apartments, multi-family
	Commercial
	Commercial forest, private
	Forest, private, non-CFR
	Forest, public
	Industrial
	Public, institutions, etc.
	Residential, platted, vacant
	Residential, rural
	Residential, single family
<b>Roads</b>	
	Two-Track/Seasonal
	Highways
	Streets
	County Roads
<b>Utilities</b>	
	Pipeline
	Electric Line

5 February 2004 Kristine Bradof  
 GEM Center for Science and Environmental Outreach  
 Michigan Technological University

The Houghton County Planning Commission funded this mapping project, with a matching grant from the National Environmental Education and Training Foundation. Printing costs were underwritten by the Houghton Rotary Club and the League of Women Voters of the Copper Country.