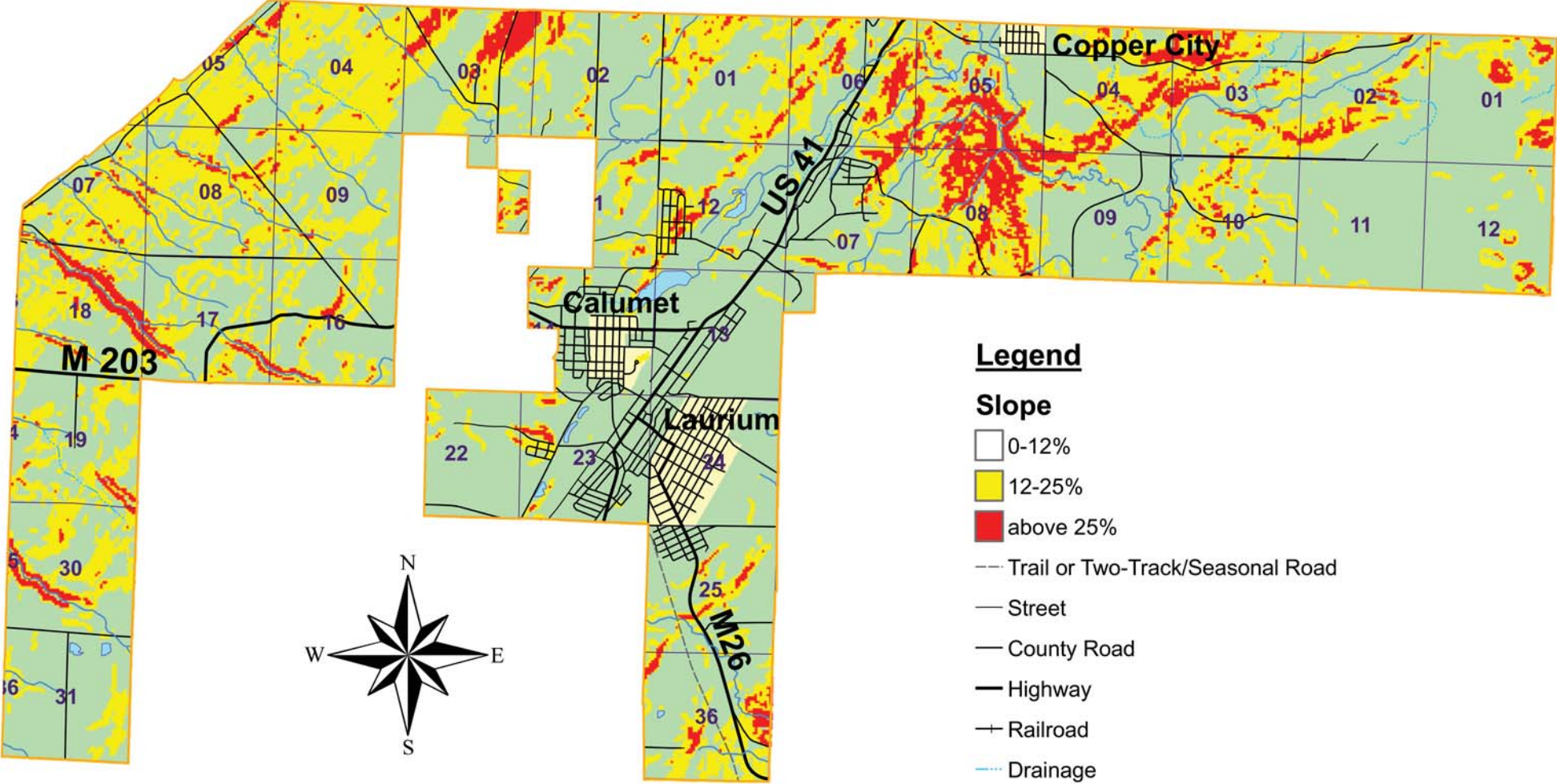


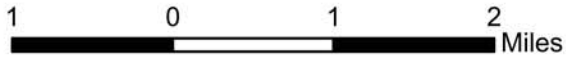
# Calumet Township - Steep Slopes



### Legend

#### Slope

- 0-12%
- 12-25%
- above 25%
- Trail or Two-Track/Seasonal Road
- Street
- County Road
- Highway
- + Railroad
- Drainage
- River or Stream
- River
- Lake
- Sections
- City or Village Limits
- Township Boundary



December 2004 Alexis M Troschinetz  
 GEM Center for Science and Environmental Outreach  
 Michigan Technological University  
 Source: Michigan Geographic Data Library, Michigan Geographic Framework