

# Franklin Township - Steep Slopes

## Legend

### Slope

0-12%

12-25%

above 25%

--- Trail or Two-Track/Seasonal Road

— Street

— County Road

— Highway

+ Railroad

--- Drainage

— River or Stream

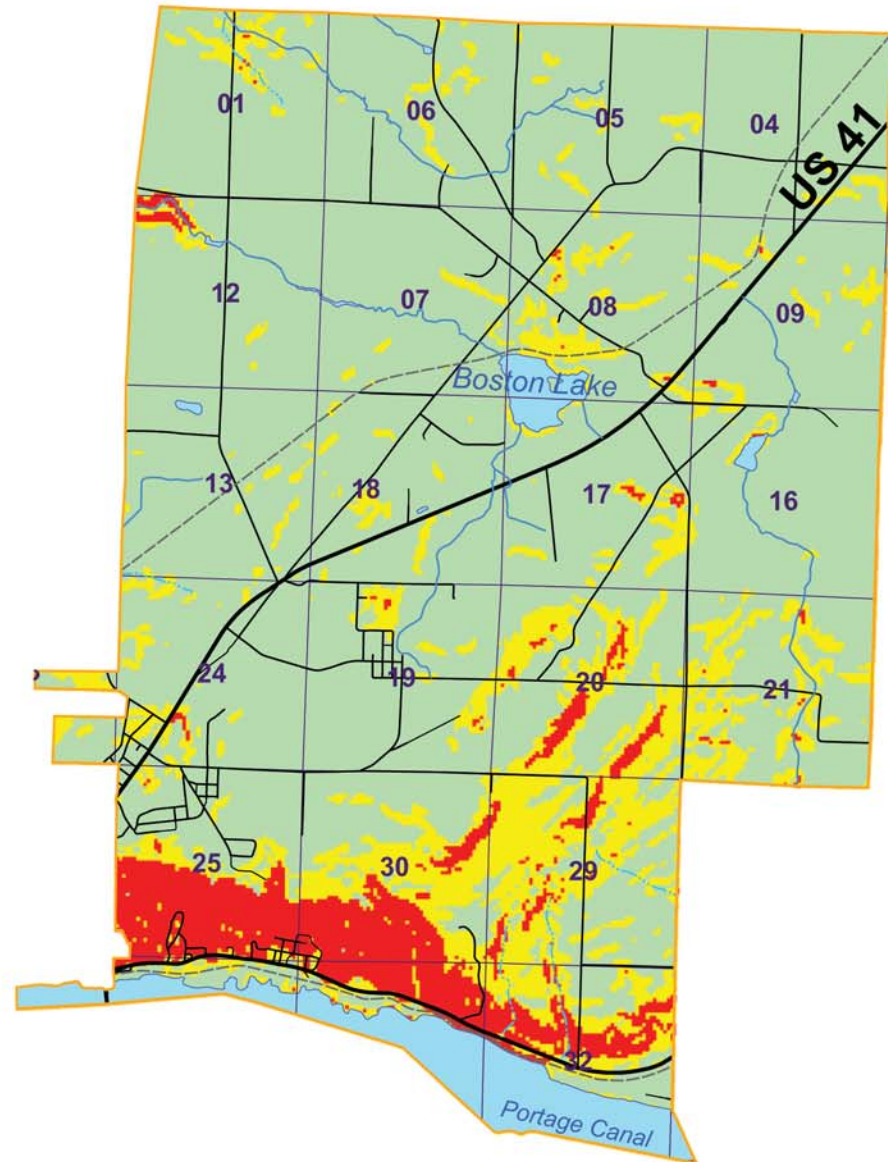
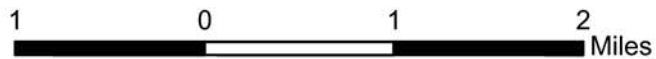
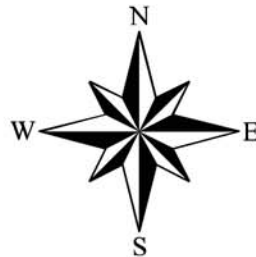
— River

— Lake

□ Sections

City or Village Limits

Township Boundary



December 2004 Alexis M Troschinetz  
 GEM Center for Science and Environmental Outreach  
 Michigan Technological University  
 Source: Michigan Geographic Data Library,  
 Michigan Geographic Framework