

Hancock Township - Steep Slopes

Legend

Slope

0-12%

12-25%

above 25%

Trail or Two-Track/Seasonal Road

Street

County Road

Highway

Railroad

Drainage

River or Stream

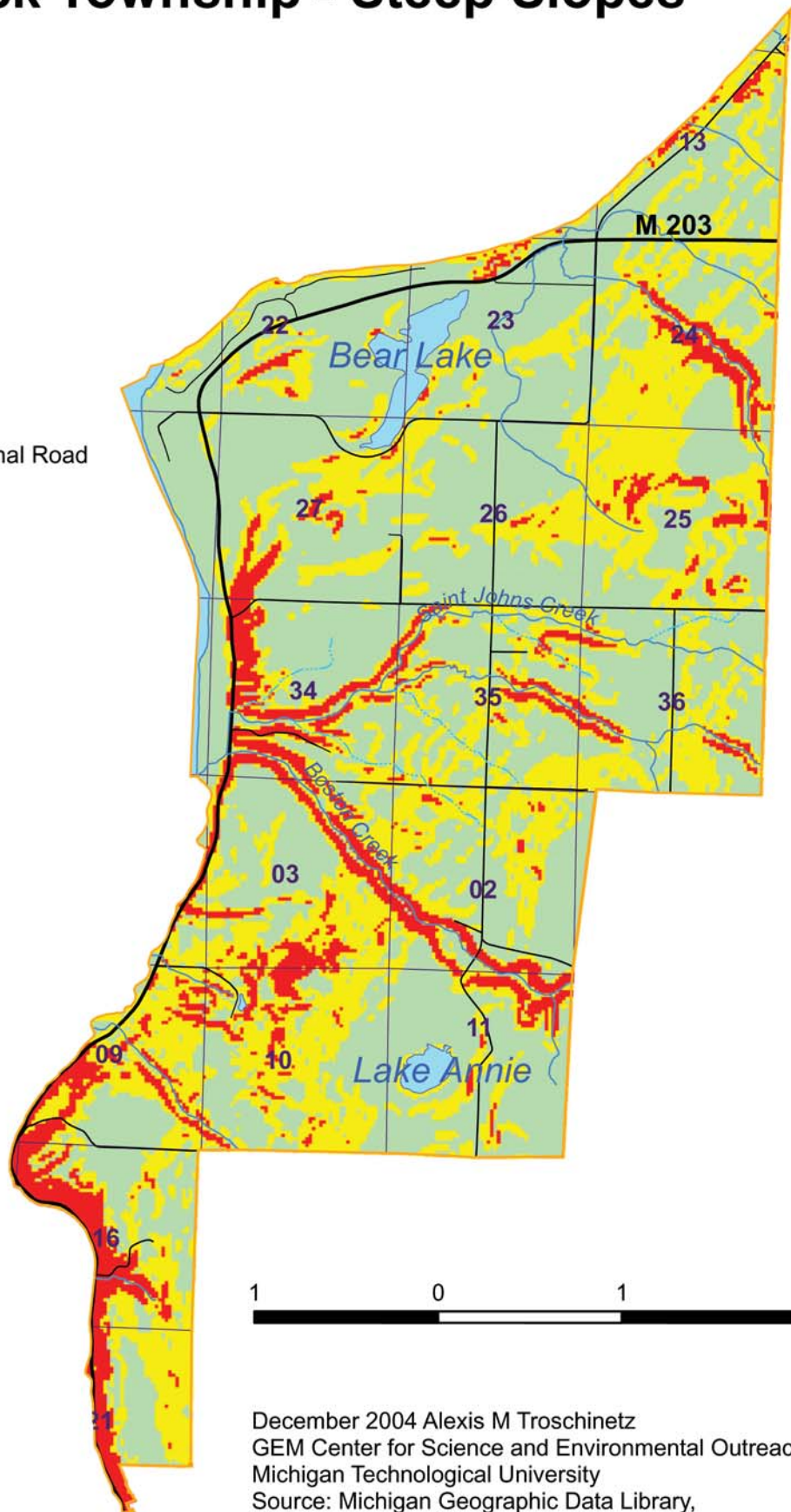
River

Lake

Sections

City or Village Limits

Township Boundary



1 0 1 2 Miles

December 2004 Alexis M Troschinetz
 GEM Center for Science and Environmental Outreach
 Michigan Technological University
 Source: Michigan Geographic Data Library,
 Michigan Geographic Framework