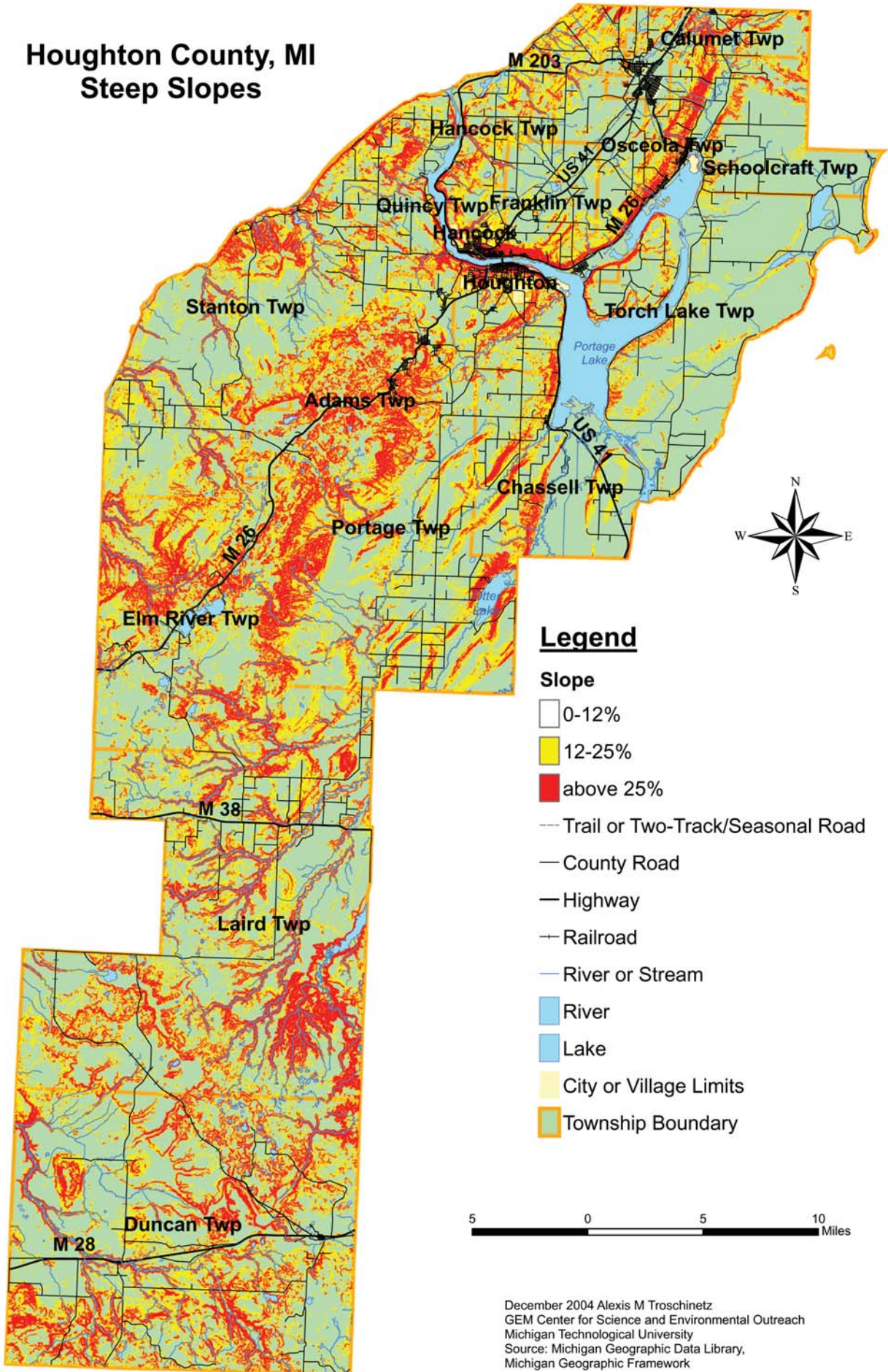


Houghton County, MI Steep Slopes



Legend

Slope

0-12%

12-25%

above 25%

Trail or Two-Track/Seasonal Road

County Road

Highway

Railroad

River or Stream

River

Lake

City or Village Limits

Township Boundary

5 0 5 10 Miles

December 2004 Alexis M Troschinetz
GEM Center for Science and Environmental Outreach
Michigan Technological University
Source: Michigan Geographic Data Library,
Michigan Geographic Framework