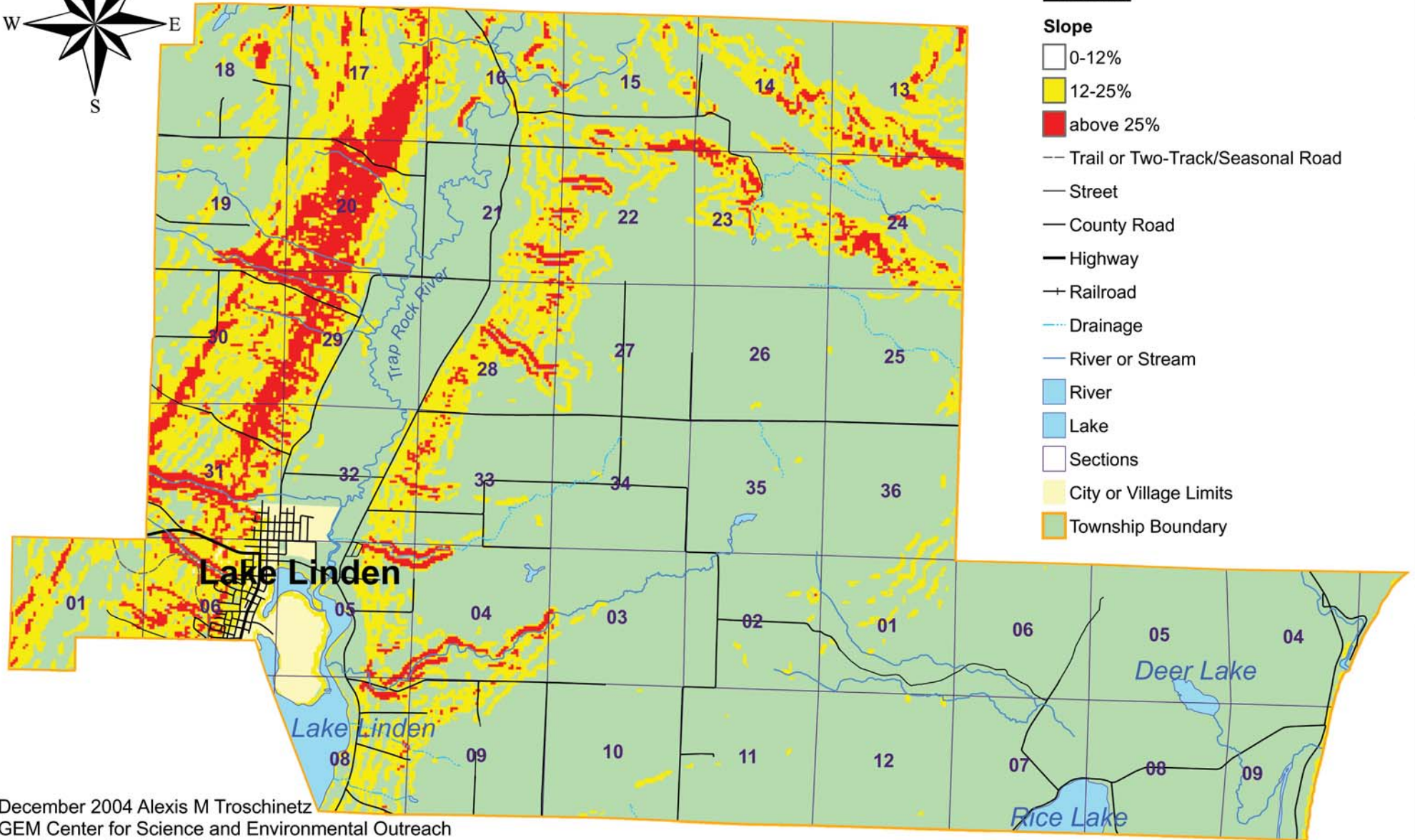


Schoolcraft Township - Steep Slopes



Legend

Slope

- 0-12%
- 12-25%
- above 25%

- Trail or Two-Track/Seasonal Road
- Street
- County Road
- Highway
- + Railroad
- Drainage
- River or Stream
- River
- Lake
- Sections
- City or Village Limits
- Township Boundary

December 2004 Alexis M Troschinetz
 GEM Center for Science and Environmental Outreach
 Michigan Technological University
 Source: Michigan Geographic Data Library,
 Michigan Geographic Framework

1 0 1 2 Miles