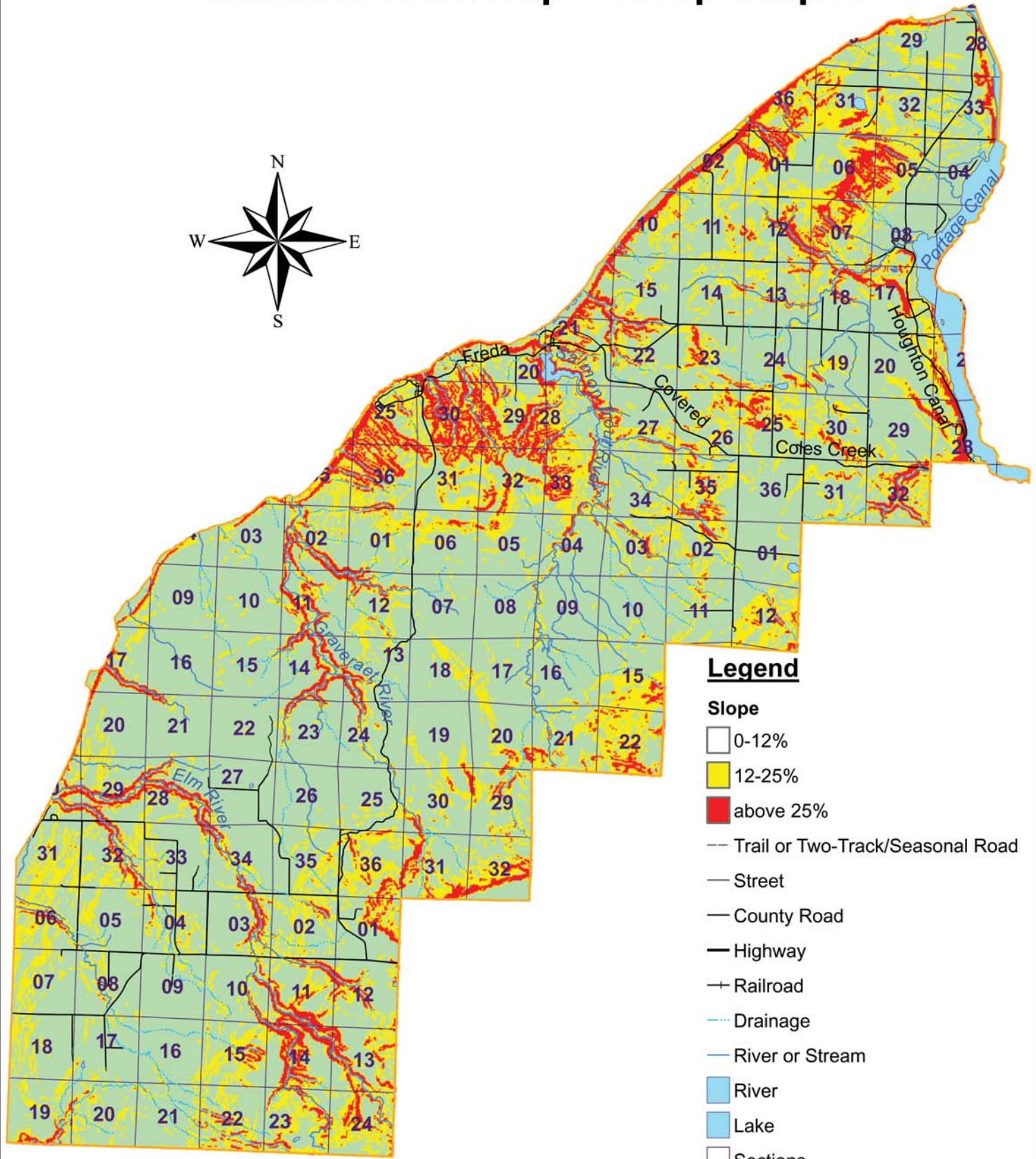


Stanton Township - Steep Slopes



Legend

Slope

- 0-12%
- 12-25%
- above 25%

--- Trail or Two-Track/Seasonal Road

— Street

— County Road

— Highway

+ Railroad

--- Drainage

— River or Stream

■ River

■ Lake

□ Sections

■ City or Village Limits

■ Township Boundary

1 0 1 2 Miles

December 2004 Alexis M Troschinetz
 GEM Center for Science and Environmental Outreach
 Michigan Technological University
 Source: Michigan Geographic Data Library,
 Michigan Geographic Framework